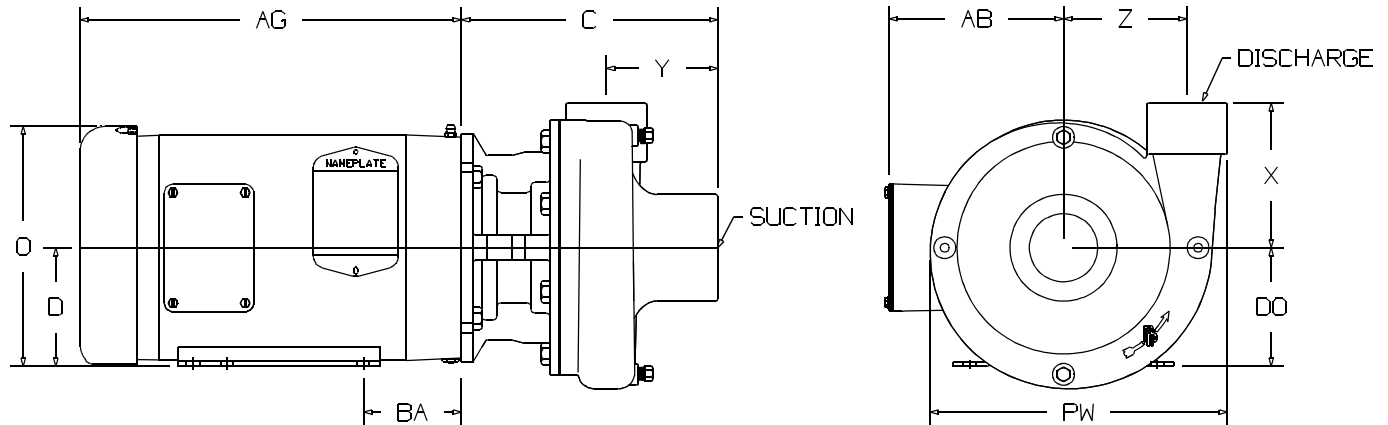
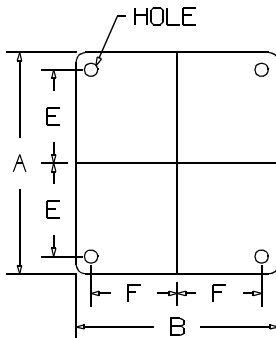


The XT Series Centrifugal Pump is available in bronze for seawater use, cast iron for chillwater use or stainless steel for special applications. Motors are available for all voltages, 50 and/or 60 Hertz, single or three phase. The standard motor style is TEFC (Totally Enclosed Fan Cooled). The ODP (Open Drip-Proof) style motor is available on special order. Flow rates up to 400 GPM and 160 feet of head are possible with this series of pumps.



XTPUMP.DXF



MODEL	PUMP END DIMENSIONS							
	C	DO	PW	X	Y	Z	DISCHARGE	SUCTION
XT100	6-5/8"	4"	8-3/8"	4"	2-3/8"	3-1/2"	1"x11-1/2"	1-1/2"x11-1/2"
XT150	7-9/16"	4-1/8"	8-3/4"	4-1/4"	3-1/4"	3-5/8"	1-1/2"x11-1/2"	2"x11-1/2"
XT200	7-5/16"	4-7/16"	9-5/16"	4-1/2"	2-7/8"	3-3/4"	2"x11-1/2"	3"x8"

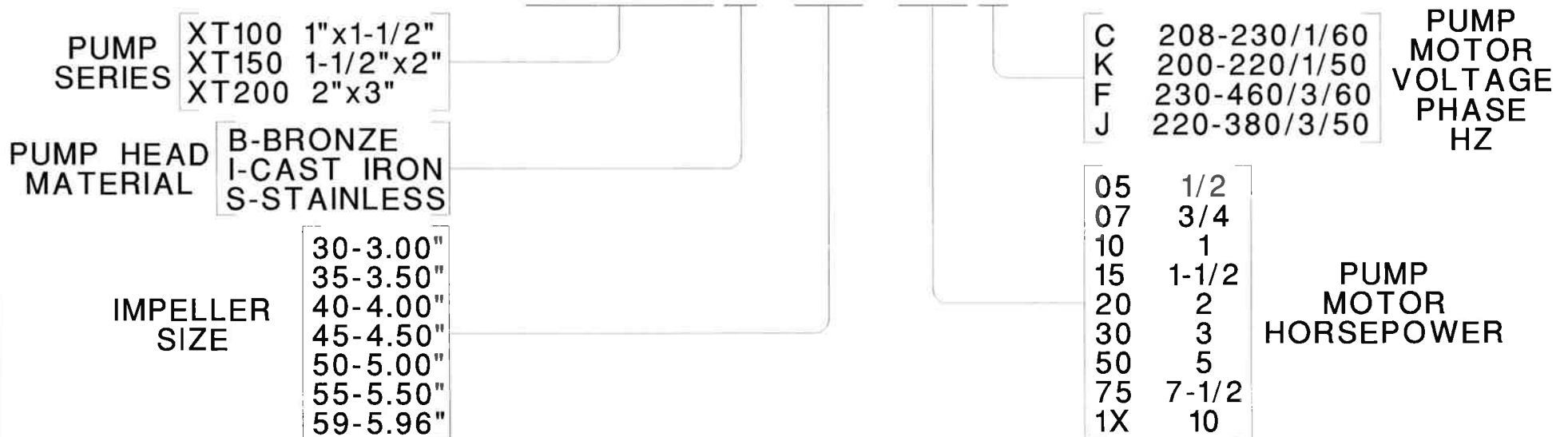
HP	RPM	FRM	JM MOTOR END DIMENSIONS									ODP		TEFC	
			A	B	D	E	F	HOLE	BA	O	P	AB	AG	AB	AG
1-1/2	3600	143JM	6-1/2"	5-15/16"	3-1/2"	2-3/4"	2"	11/32"	2-7/8"	6-7/8"	6-5/8"	5-1/4"	8-3/4"	6-3/4"	11-1/4"
2		145JM					2-1/2"								
3		145JM					2-1/4"								
5		182JM	8-1/2"	6-1/2"	4-1/2"	3-3/4"	2-3/4"	13/32"	3-1/2"	8-7/16"	7-7/8"	5-7/8"	11-1/8"	7-3/8"	14-3/4"
7-1/2		184JM	9-1/2"	8"	5-1/4"	4-1/4"	3-1/2"	13/32"	3-1/8"	10-1/16"	9-9/16"	N/A		7-3/8"	14-7/16"
10		213													
15	213														

I:\wordpfct\80990-70.wpd

AQUA-AIR MANUFACTURING, division of the James D. Nall Co., Inc.
 1050 East 9th Street, Hialeah, Florida 33010 U.S.A.
 Ph. 305-884-8363 Fax 305-883-8549 Email sales@aquair.com

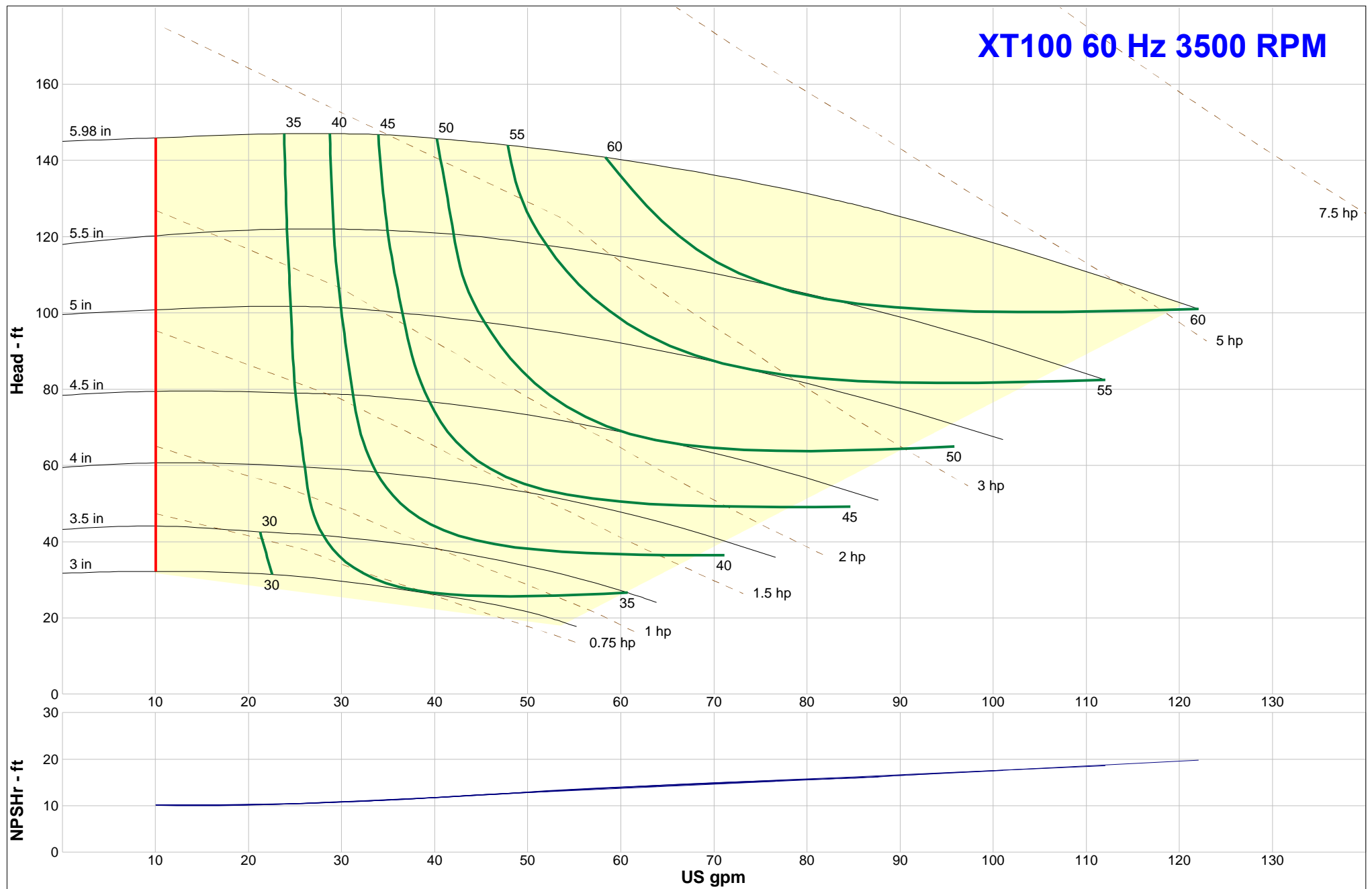
PUMP MODEL NUMBER DESCRIPTION

XT150B-45-75F

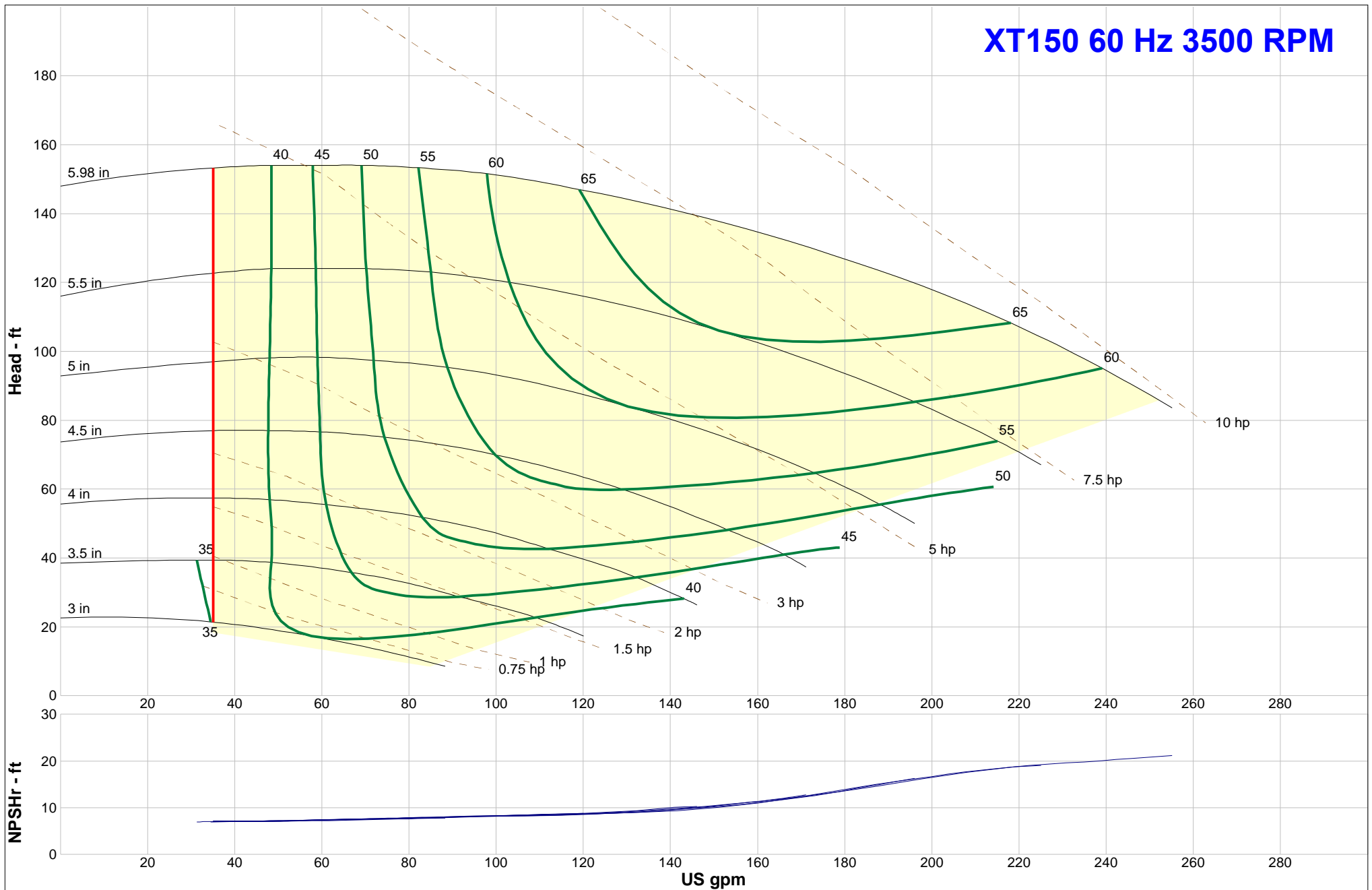


THE EXAMPLE ABOVE IS A XT150 SERIES PUMP HEAD, BRONZE CONSTRUCTION, 4.50" IMPELLER 7-1/2 HP MOTOR CAPABLE OF RUNNING ON EITHER 230 or 460 VOLT 3 PHASE, 60 HZ.

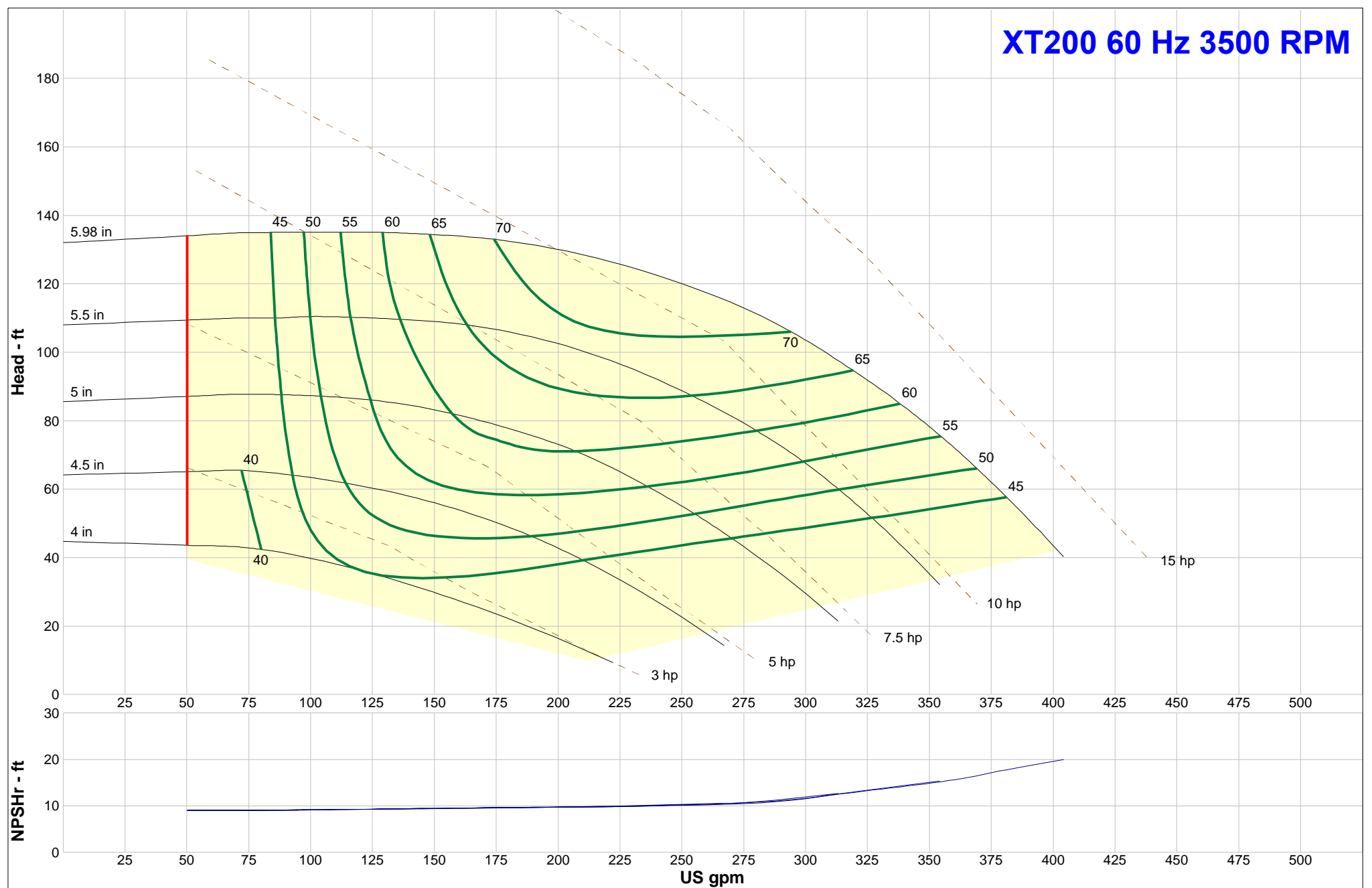
XT100 60 Hz 3500 RPM



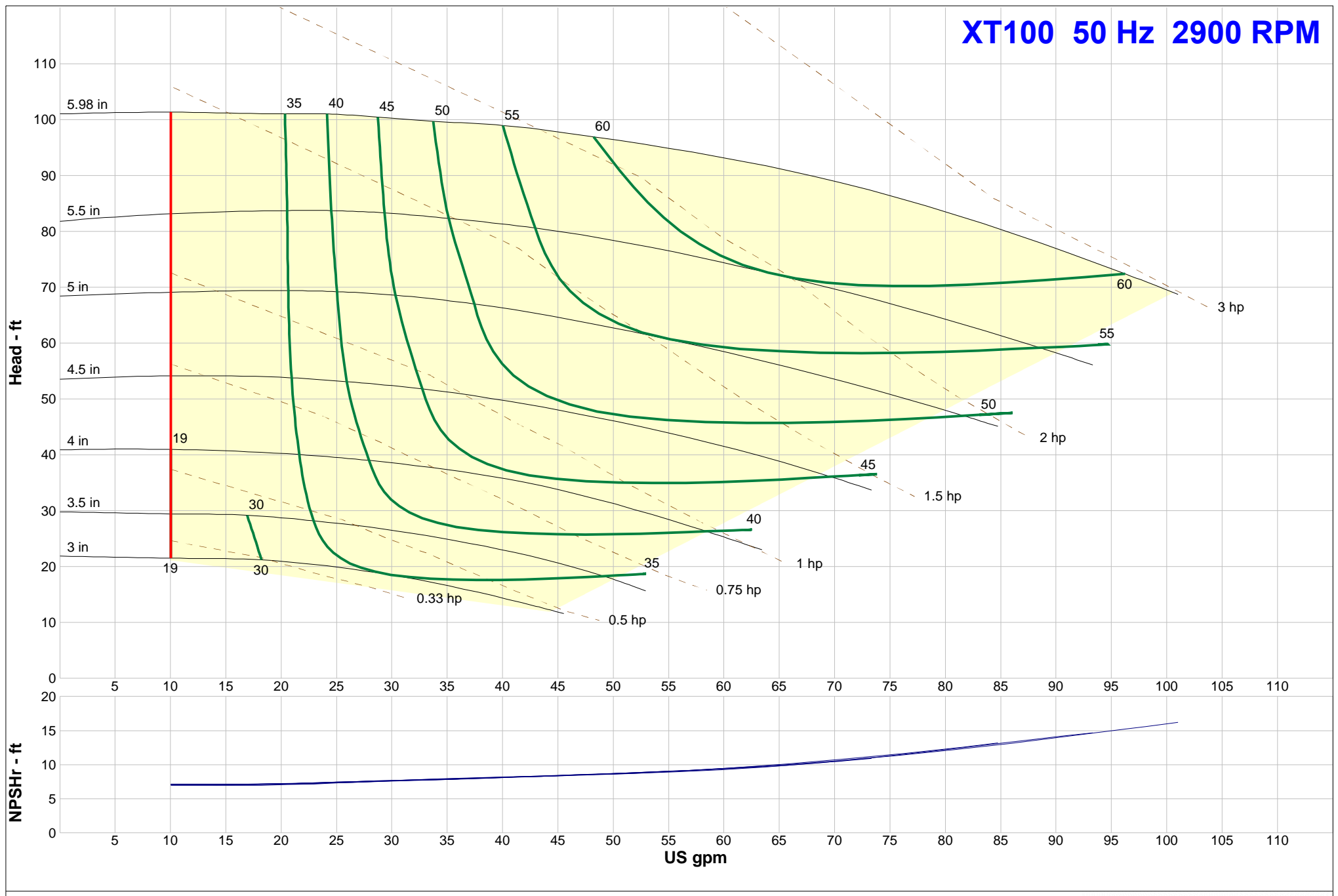
XT150 60 Hz 3500 RPM



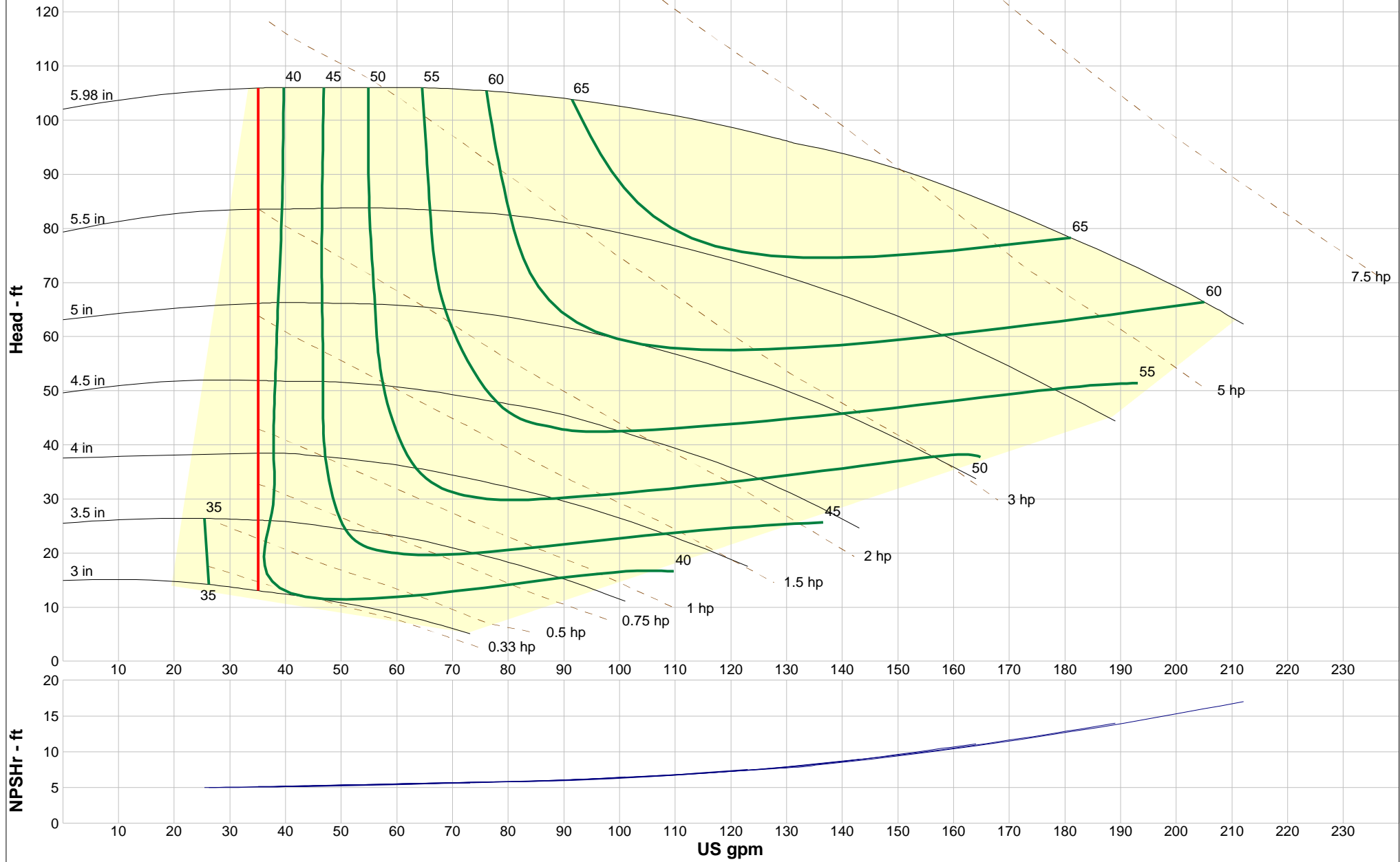
XT200 60 Hz 3500 RPM



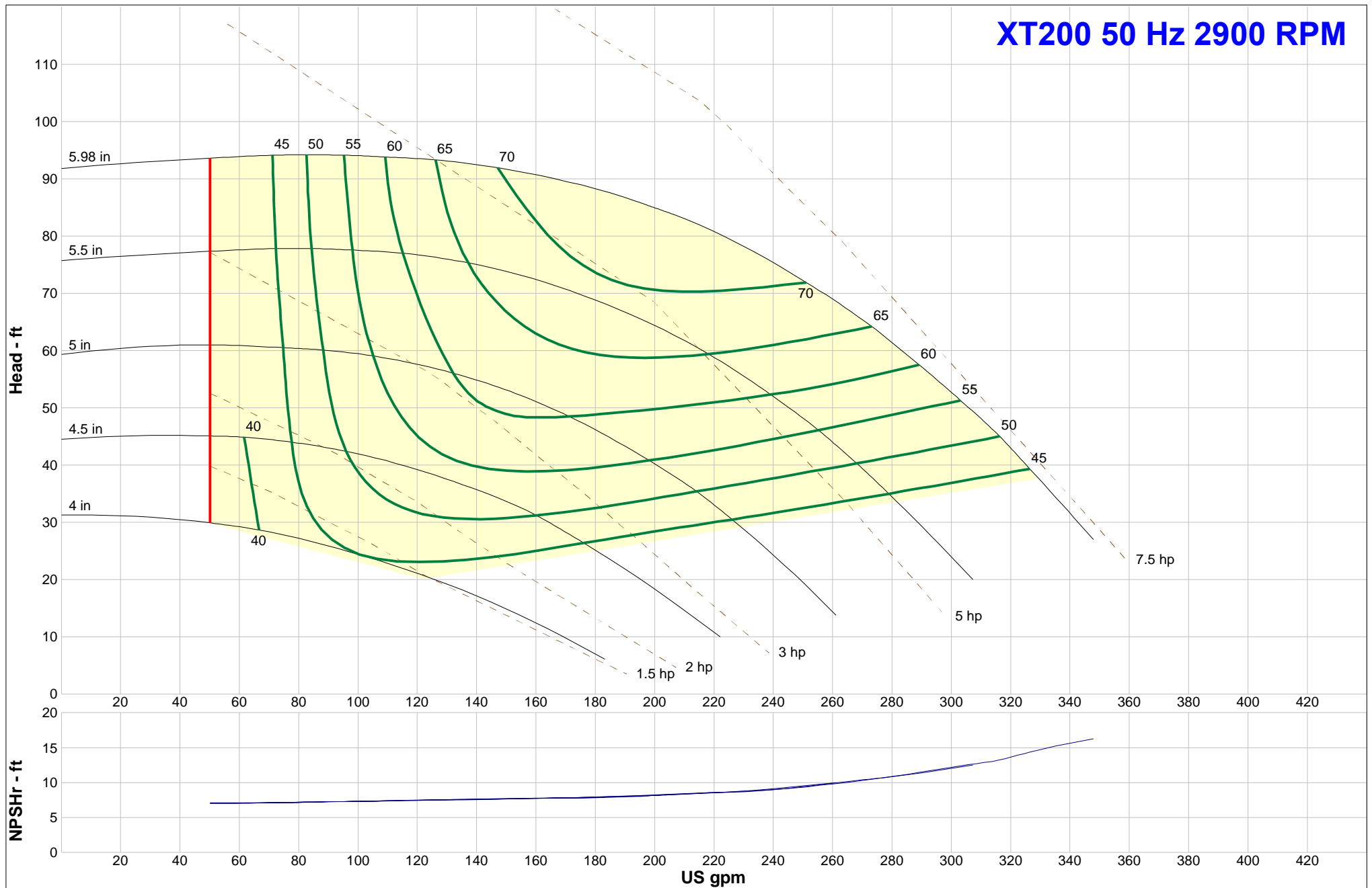
XT100 50 Hz 2900 RPM

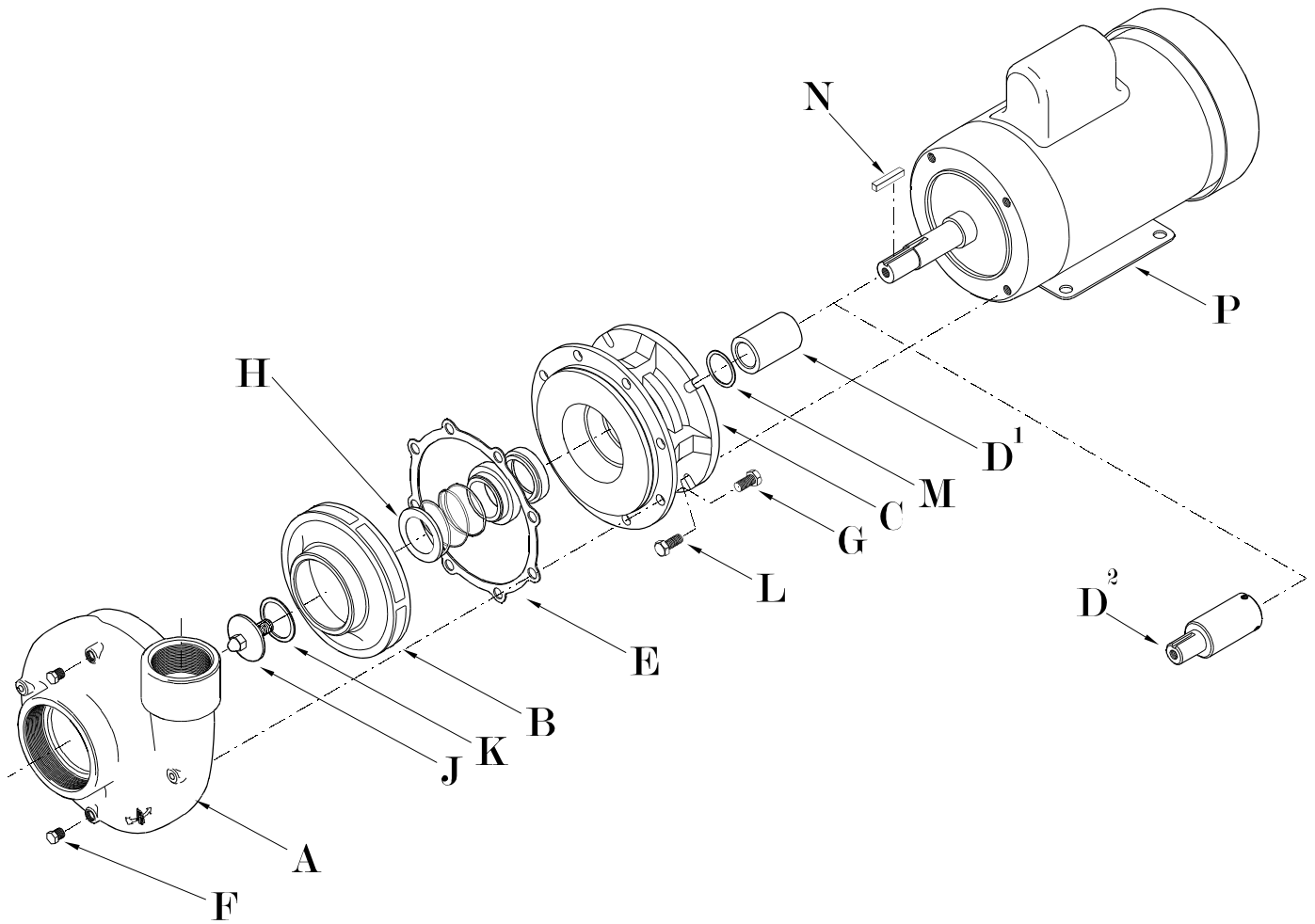


XT150 50 Hz 2900 RPM



XT200 50 Hz 2900 RPM





ITEM	DESCRIPTION
A	Volute
B	Impeller
C	Bracket
D ¹	Shaft Sleeve
D ²	Stub Shaft
E	Volute Gasket
F	Pipe Plug
G	Volute Bolts
H	Seal
J	Impeller Lockdown
K	Lockdown Gasket
L	Motor Bolts
M	Sleeve Gasket, Teflon
N	Impeller Shaft Key
P	Motor

ITEM 'P' MOTOR LISTING			
HP	115-230/1/60	230-460/3/60	MOTOR TYPE
1/2	212671-05	212673-05	TEFC
3/4	212671-07	212673-07	TEFC
1	212671-10	212673-10	TEFC
1-1/2	212671-15	212673-15	TEFC
2	212671-20	212673-20	TEFC
3	212671-30	212673-30	TEFC
5		212673-50	TEFC
7.5		212673-75	TEFC
10		212673-1X	TEFC

PUMP PARTS LISTING (BRONZE)

<u>ITEM</u>	<u>PART NUMBER</u>			<u>DESCRIPTION</u>
	<u>XT100B</u>	<u>XT150B</u>	<u>XT200B</u>	
A	216571-10	216571-15	216571-20	Volute
B	SEE CHART			Impeller
C	216571-30			Bracket
D ¹	216571-32			Shaft Sleeve
D ²	216578-03 (56C MTR) 216578-04 (145TC MTR)			Stub Shaft
E	216578-02			Volute Gasket
F	216571-34			Pipe Plug
G	216571-35			Volute Bolts
H	216578-01			Seal
J	216571-37			Impeller Lockdown
K	216571-41			Lockdown Gasket
L	216571-38			Motor Bolts
M	216571-41			Sleeve Gasket, Teflon
N	216571-40			Impeller Shaft Key
P	SEE CHART			Motor

ITEM 'B' BRONZE IMPELLER LISTING

<u>CODE</u>	<u>DIAMETER</u>	<u>PART NUMBER</u>		
		<u>XT100B</u>	<u>XT150B</u>	<u>XT200B</u>
30	3.00"	216575-30	216576-30	
35	3.50"	216575-35	216576-35	
38	3.75"		216576-38	
40	4.00"	216575-40	216576-40	216577-40
45	4.50"	216575-45	216576-45	216577-45
50	5.00"	216575-50	216576-50	216577-50
55	5.50"	216575-55	216576-55	216577-55
59	5.96"	216575-59	216576-59	216577-59

PUMP PARTS LISTING (IRON)

<u>ITEM</u>	<u>PART NUMBER</u>			<u>DESCRIPTION</u>
	<u>XT100I</u>	<u>XT150I</u>	<u>XT200I</u>	
A	216571-11	216571-16	216571-21	Volute
B	SEE CHART			Impeller
C	216571-31			Bracket
D ¹	216571-33			Shaft Sleeve
D ²	216578-03 (56C MTR) 216578-04 (145TC MTR)			Stub Shaft
E	216578-02			Volute Gasket
F	216571-34			Pipe Plug
G	216571-36			Volute Bolts
H	216578-01			Seal
J	216571-37			Impeller Lockdown
K	216571-41			Lockdown Gasket
L	216571-39			Motor Bolts
M	216571-41			Sleeve Gasket, Teflon
N	216571-40			Impeller Shaft Key
P	SEE CHART			Motor

ITEM 'B' IRON IMPELLER LISTING

<u>CODE</u>	<u>DIAMETER</u>	<u>PART NUMBER</u>		
		<u>XT100I</u>	<u>XT150I</u>	<u>XT200I</u>
40	4.00"		216580-40	216579-40
45	4.50"		216580-45	216579-45
50	5.00"	216581-50	216580-50	216579-50
55	5.50"		216580-55	216579-55
59	5.96"		216580-59	216579-59