

FEATURES

- ❑ High capacity motorized impeller squirrel cage blower is designed for quiet operation with flexible duct systems.
- ❑ Round flexible duct connector installed on the unit. This connector also adapts to Aqua-Air AT series adapter duct tees.
- ❑ Three way motorized Pop-Top water valve is pre-installed on the unit. One handed removal for ease of service
- ❑ Dual condensate outlets on the drain pan are factory connected into a common 1/2" hose barb tee for ease of installation.
- ❑ Anti-splash, anti-fungal foam media inside the drain pans prevent water splashing out even in the roughest seas

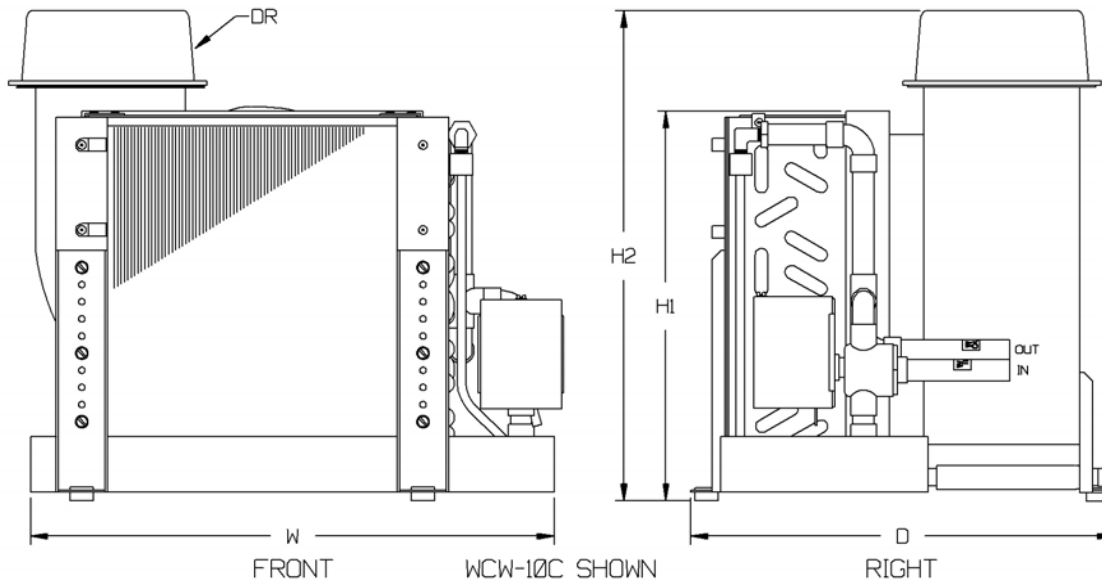


- ❑ Vertically adjustable mounting legs with rubber vibration pads and mounting screws.
- ❑ The air bleeder is mounted on the end of a 12" plastic tube for easy access during commissioning of the system.
- ❑ All surfaces that might have condensate form on them are covered with 1/8" thick foam insulation.
- ❑ Units available for 115/1/60 and 200-230/1/50-60 power inputs.
- ❑ Units available with optional 230-1 internal heating elements

| SPECIFICATIONS | WCW-05 | | WCW-07 | | WCW-10 | | WCW-12 | | WCW-16 | | WCW-18 | | WCW-20 | | WCW-24 | | |
|--|----------------|--------|---------------|--------|-----------------|--------|-----------------|--------|-----------------|--------|-----------------|--------|-----------------|--------|-----------------|--------|-----|
| COOLING CAPACITY BTU/HR - KCAL/HR | 5,000 1,250 | | 7,000 1750 | | 10,000 2,500 | | 12,000 3,000 | | 16,000 4,000 | | 18,000 4,500 | | 20,000 5,000 | | 24,000 6,000 | | |
| AIR FLOW CAPACITY CFM / M ³ H | 135 | 230 | 270 | 460 | 330 | 560 | 400 | 679 | 530 | 900 | 600 | 1020 | 600 | 1020 | 800 | 1360 | |
| WEIGHT Lbs / Kg | 19 | 8.6 | 23 | 10.5 | 25 | 11.4 | 32 | 14.5 | 34 | 15.5 | 36 | 16.4 | 38 | 17.3 | 39 | 17.7 | |
| WIDTH in / mm | W | 15 | 384 | 14-1/4 | 362 | 16 | 406 | 17-1/2 | 445 | 17-1/2 | 445 | 21 | 533 | 22-7/8 | 581 | 23-1/8 | 587 |
| DEPTH in / mm | D | 13 | 330 | 14 | 356 | 14-1/4 | 362 | 14-1/4 | 362 | 15 | 384 | 16 | 406 | 15-1/2 | 394 | 16-1/4 | 413 |
| HEIGHT TO TOP OF COIL in / mm | H1 | 9-1/2 | 241 | 10 | 254 | 11-1/2 | 292 | 13 | 330 | 13 | 330 | 14-1/4 | 362 | 15-1/4 | 387 | 16-1/4 | 413 |
| MAXIMUM HEIGHT in / mm | H2 | 12-1/4 | 311 | 13 | 330 | 14-1/4 | 362 | 15-1/2 | 394 | 15-1/2 | 394 | 15-7/8 | 403 | 16-5/8 | 422 | 16-5/8 | 422 |
| FAN AMP DRAW 115 / 230 | 1.6 / 0.8 | | 1.6 / 0.8 | | 1.6 / 0.8 | | 1.6 / 0.8 | | 1.8 / 0.9 | | 1.8 / 0.9 | | 1.8 / 0.9 | | N.A. / 1.0 | | |
| POWER, WATTS | 182 | | 182 | | 182 | | 182 | | 200 | | 200 | | 200 | | 216 | | |
| MIN RETURN AIR in ² / cm ² | 64 | 413 | 72 | 465 | 100 | 645 | 120 | 774 | 144 | 929 | 180 | 1161 | 200 | 1290 | 240 | 1548 | |
| MIN SUPPLY AIR in ² / cm ² | 32 | 207 | 40 | 258 | 48 | 310 | 60 | 387 | 72 | 465 | 90 | 581 | 100 | 645 | 120 | 774 | |
| CHILLWATER IN & OUT OD in/mm | 5/8 | 16 | 5/8 | 16 | 5/8 | 16 | 5/8 | 16 | 5/8 | 16 | 5/8 | 16 | 7/8 | 22 | 7/8 | 22 | |
| FLEX DUCT COLLAR OD in/mm | DR | 4 | 100 | 5" | 125 | 5 | 125 | 6 | 150 | 6 | 150 | 7 | 175 | 7 | 175 | 7 | 175 |
| INTERNAL HEATER (OPT) 230-1-60 | 1.0 kW | | 1.5 kW | | 1.5 kW | | 2.0 kW | | 2.0 kW | | 2.0 kW | | 3.0 kW | | 3.0 kW | | |
| INTERNAL HEATER AMP DRAW AT 230-1-60 | 4.3 | | 6.5 | | 6.5 | | 8.7 | | 8.7 | | 8.7 | | 13.0 | | 13.0 | | |

ADD "C" TO THE END OF THE MODEL NUMBER FOR A 200-230/1/50-60 UNIT

80950.WPD



Model Number Examples
Unit without Internal Element Heater

WCW-16C

16 = 16,000 BTU/HR C = 230-1-50/60

Unit with Internal Element Heater

WCW-10C-1.5

10 = 10,000 BTU/HR C = 230-1-50/60 1.5 = 1.5 kW 230-1 heater