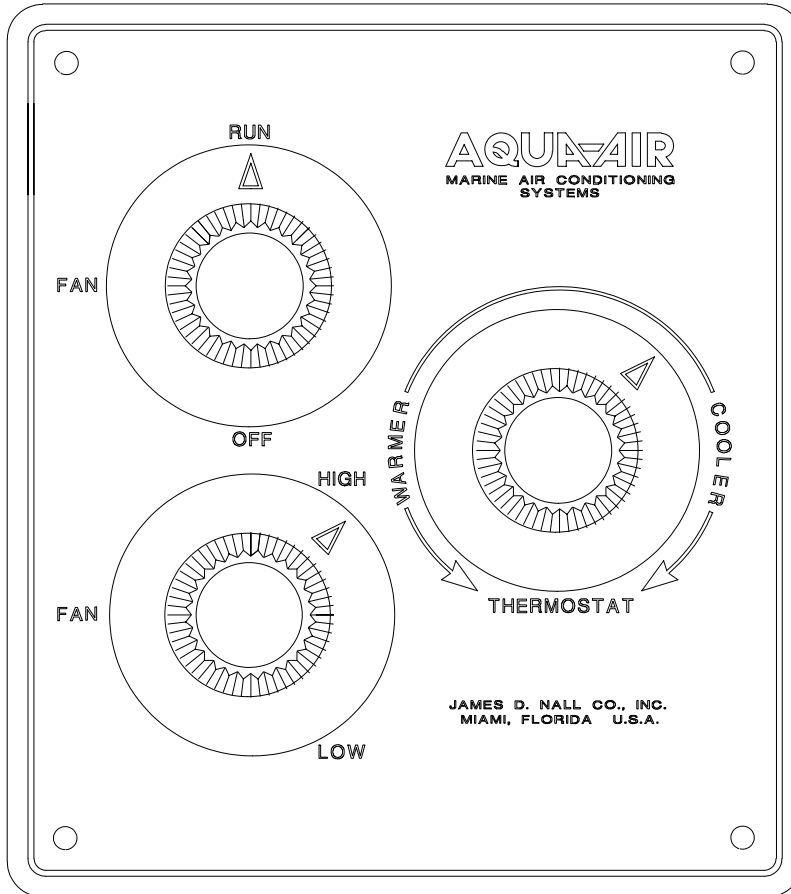


The Aqua-Air AQS Series of three knob electro mechanical switch assemblies provide for control over all electrical components in a direct expansion split or self contained system. The OFF-FAN-RUN switch controls the system mode of operation, the FAN switch controls the speed of the fan motor and the THERMOSTAT controls when the compressor and reversing valve cycle on and off based upon the room temperature.

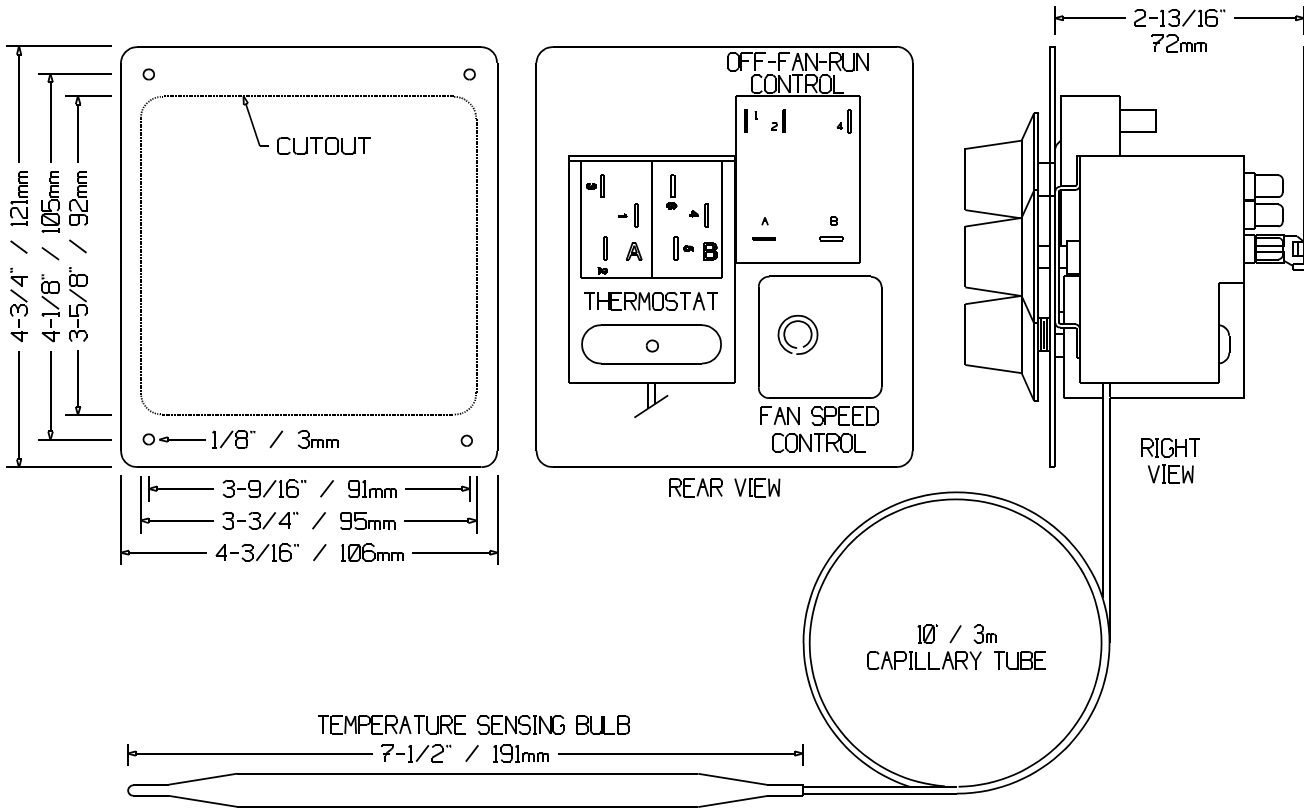


**Standard Features**

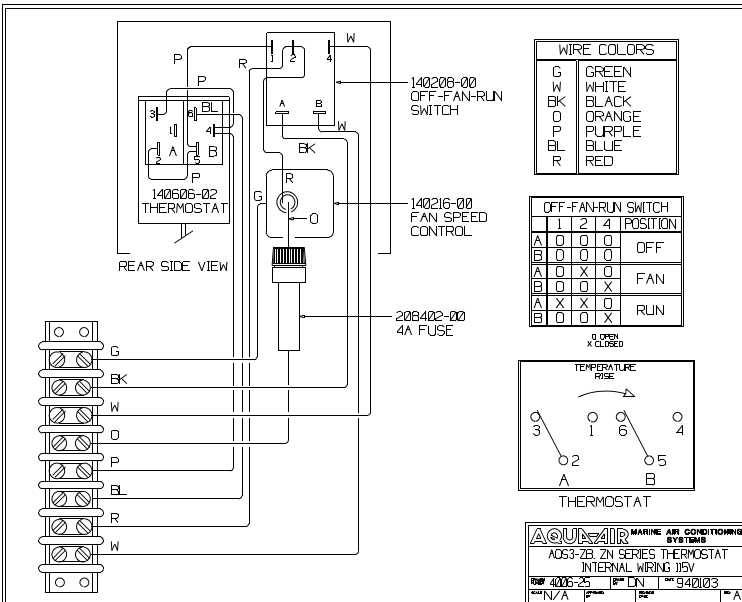
- Available in Brown (N) or Black (B) faceplates & knobs
- Available in cooling only (AQS1 series) or reverse cycle (AQS3 series) models
- Available in 115v or 230v
- 10' ( 3m ) capillary tube temperature sensor
- Color coded terminal strip with a 3' ( 1m ) wire harness for split systems
- Quick disconnect plug for self contained units with a 10' ( 3m ) wiring harness
- Variable speed ( Z ) or 2 speed ( B ) fan control
- Supplied with plastic covers for both the back of the control and the terminal strip (if used)

| AQS SERIES THERMOSTATS |                |                          |                        |        |        |                 |
|------------------------|----------------|--------------------------|------------------------|--------|--------|-----------------|
| MODEL                  | COOLING SYSTEM | COOLING / HEATING SYSTEM | USE CONTROL WITH UNITS |        |        | CONNECTION TYPE |
|                        |                |                          | K(H), K(H)L            | AQF(H) | SMR(S) |                 |
| AQS1-ZB, ZN            | x              |                          | x                      | x      |        | TERMINAL STRIP  |
| AQS1-ZBP, ZNP          | x              |                          |                        |        | x      | PLUG            |
| AQS3-ZB, ZN            |                | x                        | x                      | x      |        | TERMINAL STRIP  |
| AQS3-ZBP, ZNP          |                | x                        |                        |        | x      | PLUG            |

For 230v units add a 'C' to the end of the model number Example: AQS3-ZBC



**Typical Wiring Schematic for AQS3-ZB or ZN Thermostat**



| AQS3-ZBPC Thermostat Nomenclature |       |               |
|-----------------------------------|-------|---------------|
| Voltage                           | blank | 115v          |
|                                   | C     | 230v          |
| Connection                        | blank | Terminal Plug |
|                                   | P     | Terminal Plug |
| Color                             | B     | Black         |
|                                   | N     | Brown         |
| Fan Speed Control                 | B     | 2 Speed       |
|                                   | Z     | Variable      |
| Type                              | 1     | Cooling       |
|                                   | 3     | Heat/Cool     |

I:\wordpfct\80095.wpd

**AQUA-AIR MANUFACTURING, division of the James D. Nall Co., Inc.**  
 1050 East 9th Street, Hialeah, Florida 33010 U.S.A.  
 Ph. 305-884-8363 Fax 305-883-8549 Email sales@aquair.com